



**MILESTONE**  
INFRASTRUCTURE

A part of **MGroup**Services

# Milestone Infrastructure Environment Strategy

2021-2025





**At Milestone Infrastructure we acknowledge the role we have to play in facing up to the challenges of the changing climate, the loss of biodiversity and impacts on our supply of natural resources. Our response is to put the environment at the heart of what we do and to use the skills and resources we have to deliver positive impacts wherever we operate.**

**By embedding the environment in our business as usual approach, in how we innovate and drive efficiencies and in how we communicate with each other, we can meet the needs of this generation whilst safeguarding the needs of future generations. This Environment Strategy sets out our ambitious targets and demonstrates our commitment to delivering meaningful change whilst also maintaining sustainable growth of our business.**



**Adrian Cooke**  
Managing Director

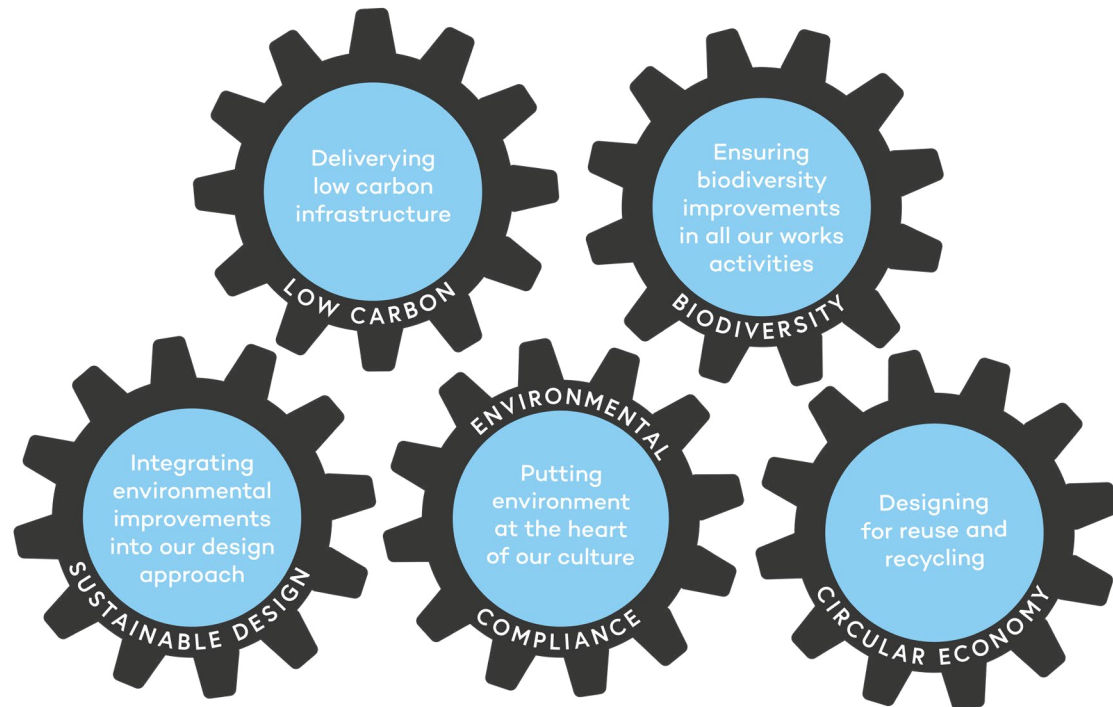


## Introduction to the Milestone Environment Strategy – Delivering What We Promise

At Milestone Infrastructure we play a critical role in maintaining and improving the nations transport infrastructure. As a result of our activities there is a constant interaction with the natural environment around us; we aim to not only minimise the impact of our operations but wherever possible to leave a lasting positive legacy.

It is clear that our clients, our people and the communities that we work in expect businesses like ours to respect the environment, alongside our duties to manage and maintain the transport networks that we all rely on. This environment strategy sets out our ambitions over the next five years, from the period of 2021 to 2025, to take action and deliver significant improvements for the environment across our operations in line with our core business values.

### Our 5 Point Environment Plan - 2021-2025

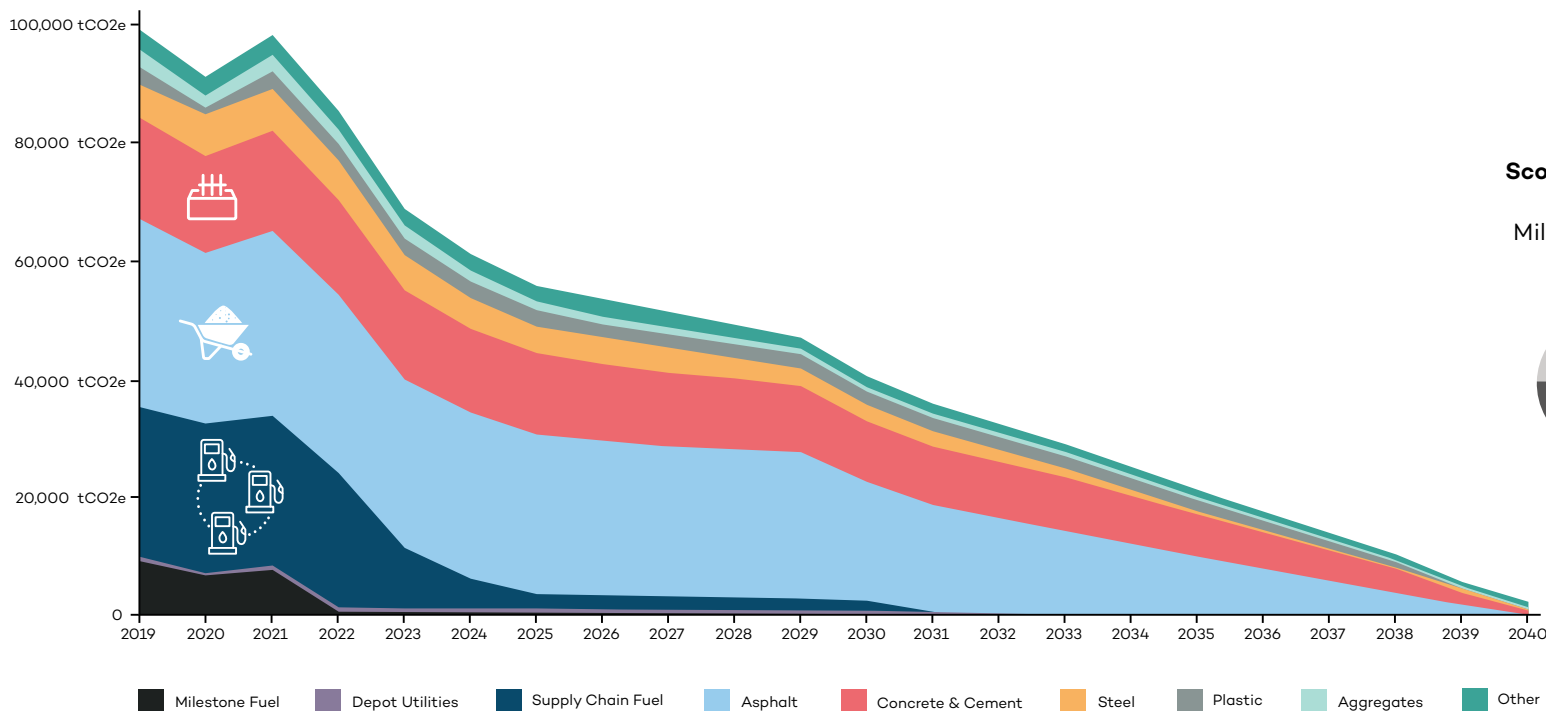


## Net-Zero Carbon Target

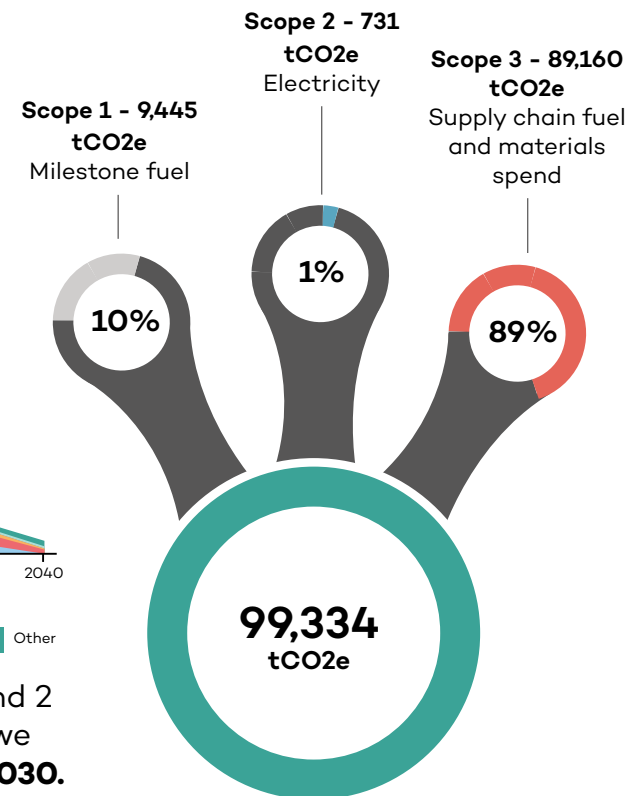
In 2019 the UK government set out a pathway to becoming Net-Zero carbon by 2050, with many of our clients declaring climate emergencies in the same year. Milestone Infrastructure has set an ambitious yet deliverable target of being **net-zero carbon throughout its operations, including supply chain, by 2040**. In addition, we are committing to achieving a 40% reduction in carbon (measured by intensity) by 2025 and 60% by 2030 from our baseline year of 2019.



## Net-Zero Carbon Pathway



## Milestone Carbon Baseline



In 2019 around 11% of our emissions came directly from our operations, known as Scope 1 and 2 emissions, such as the fuel in our fleet and energy consumed in the offices and depots that we operate from. **We are committed to reducing this element of our emissions to net-zero by 2030.** The remaining 89% of our emissions, and therefore our biggest impact on climate change, came from the materials we buy and the supply chain we rely on to deliver our activities. This shows us that to make a real impact we need to focus on how we work with our supply chain and key material manufacturers to drive down our carbon emissions.

2019 Baseline Data



Electric roadsweeper – Hinkley Point C

We aim to transition the Milestone Infrastructure fleet away from traditional fossil fuels entirely by the end of 2022, and our supply chain by 2025, through the use of electric vehicles and plant (<3.5t) as well as the wholesale use of Hydrotreated Vegetable Oil (HVO) diesel. HVO is produced from waste cooking oil sources and reduces carbon emissions from vehicles and plant by around 90%. We see this as a key interim solution for vehicles and plant where no suitable electric or hydrogen alternative is available. In addition we are reducing the average CO<sub>2</sub> emissions of our company car fleet and installing electric vehicle charge points across our offices and depots to support our people switching away from petrol and diesel engines.



**HVO is produced from waste sources and reduces carbon emissions from fuel by around 90%**

HVO tank being used on a Milestone Infrastructure site in Oxfordshire

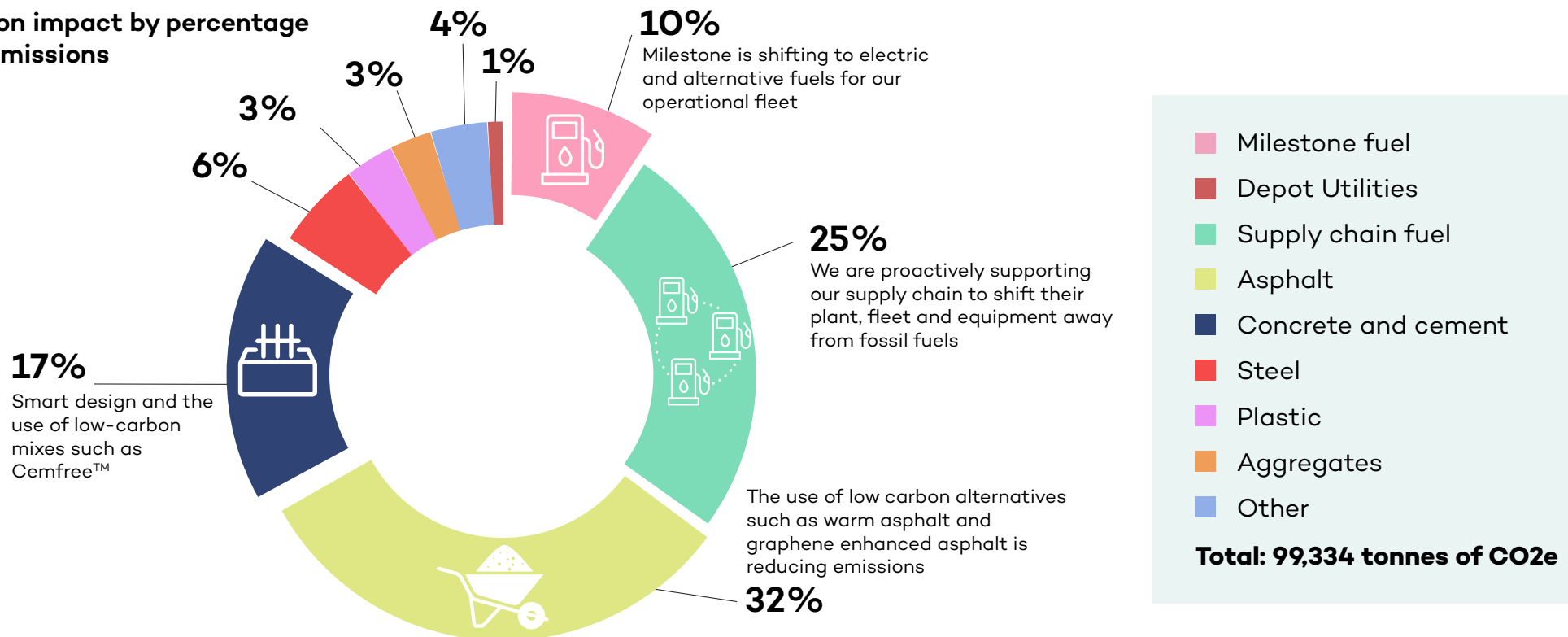
As part of our approach to reducing the carbon emissions of our material use we will work to design out carbon from our activities, using the carbon mitigation hierarchy approach of build nothing, build less and build clever (see Sustainable Design).

Working collaboratively with our clients, design teams and our supply chain we will increase the use of low carbon and recycled materials (see Circular Economy) and reduce the amount of high carbon intensity materials such as virgin steel that we use within our projects. We will work to ensure lower carbon materials, such as warm asphalt, are the default material as well as look at carbon across the wholelife of the asset.

**TARGETS**

- We are committing to achieving a 40% reduction in carbon (measured by intensity) by 2025. For our long term carbon targets please refer to the Milestone Infrastructure Net-Zero Carbon Strategy.

**Our carbon impact by percentage of total emissions**





Micheldever Recycling Centre –  
Hampshire Highways

We view the infrastructure assets we maintain as an important source of materials and we are shifting away from consuming virgin materials wherever possible, both using materials recycled from the asset itself as well as designing construction activities to allow for the reuse of assets at the end of their lifecycle.

We operate a number of permitted recycling centres for our clients where we process, treat and recycle waste streams into high quality materials that can be reused back in our projects. We employ specialist staff that manage and support the operation of these activities, as well as coordinating trials of innovative materials and processes to further reduce waste and increase recycling.

#### Targets:

- We will increase the amount of sustainable materials produced from recycling facilities to 50,000t per annum by 2025



Laying recycled plastic kerbs in Hampshire

Biodiversity is the term which describes the variety of life on earth or in any given area. It includes the plants, animals, bacteria and fungi which support life, maintain ecological balance, and that we interact with as part of our operations.

Within Milestone Infrastructure we support our client's biodiversity ambitions and requirements through design and delivery of maintenance and construction projects. We are able to undertake biodiversity assessments that ensure we maximise the opportunities for improvements on-site, going above and beyond statutory requirements.

Biodiversity Net Gain is an approach to construction activities that leaves biodiversity and ecosystems in a better state than before. Where our works have an impact on biodiversity we will provide an increase in appropriate natural habitats and ecological features over and above anything that we affect during our works. In addition we will measure the benefits this improved biodiversity will have on carbon sequestration and climate change adaptation, allowing for the cumulative benefits to be captured and shared.

We offer an end-to-end ecological service to our clients, reducing costs on-site during delivery, and ensuring biodiversity enhancements are successfully delivered as part of our projects. We also provide training and support to all our people in how they can make a difference to biodiversity as part of their roles.

We are adopting the Plantlife “**Managing Grassland Road Verges**” guidance in order to improve biodiversity on the road network through our approach to routine and cyclical activities.



*Cut and collect trial in Cambridgeshire to improve biodiversity of grass verges*



*Wildflower strip planted along a river in Oxfordshire*

## TARGETS

- Construction projects will deliver more than 10% Net Gain by 2025

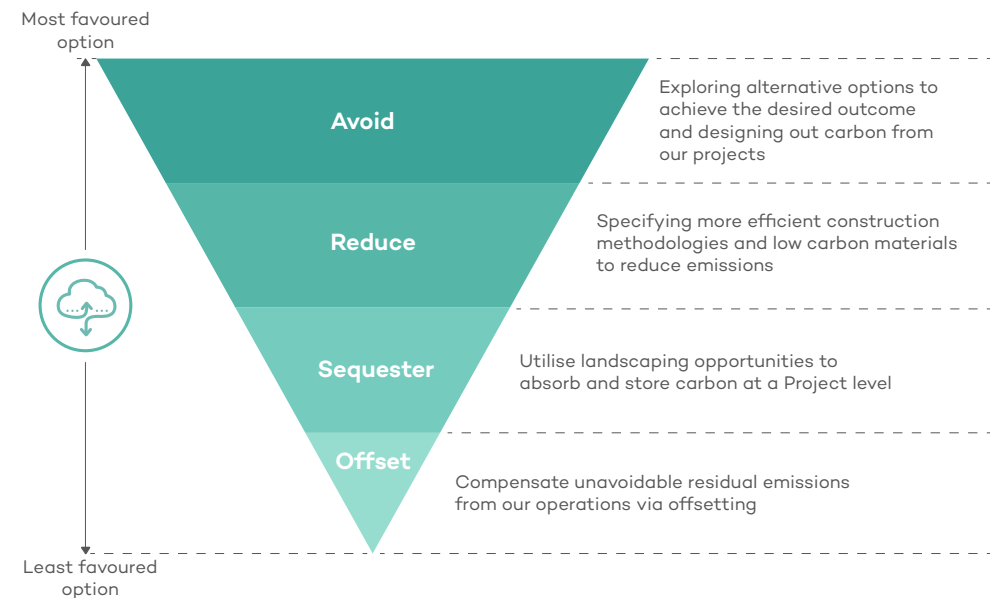
Within Milestone we have a multi-skilled design team spread across our projects of more than 150 people, who are able to have a significant influence on the environmental outcomes of the projects that we design and deliver for our clients. By building the targets within this environment strategy into their work they underpin the successful delivery of our ambitions.

In order to support our clients in meeting their climate targets we are able to offer our specialist and award winning design skills and services to influence, support and deliver tangible improvements to the environment.

Within Milestone Infrastructure we have a team of sustainability and environmental specialists who can support our clients, designers and operational teams in the planning, design and delivery of construction projects. We work closely with our clients, holding carbon reduction workshops, undertaking carbon assessments of design and build projects in line with PAS2080 (Carbon Management in Infrastructure standard) and supporting the successful delivery of biodiversity improvements on-site as well as managing our recycling operations and working closely with the Environment Agency (EA) and other stakeholders to deliver innovations and compliant construction activities.

**TARGETS**

- Milestone Infrastructure will gain PAS2080 accreditation by 2025





In order to ensure we operate our business in line with relevant legislation and environmental controls we have a robust and transparent approach to compliance, with a culture of reporting and speaking up when things aren't right – we call this MI Life.

Through digital innovation and tools we are making it easier for our operational teams to be compliant – for example through the use of our Milestone Infrastructure Waste App which allows operatives to manage waste movements without the need for lots of paperwork. These digital tools improve efficiency and provide better data, as well as reduce the risk of incidents.

In Milestone Infrastructure we operate a large fleet of vehicles and plant and we are taking action to tackle our largest source of incidents, minor spills of fuel and hydraulic oils. We are working closely with M Group Services Plant & Fleet Solutions to trial hydraulic hose sleeves, internal vehicle bunds and other innovations and improvements designed to prevent and minimise the likelihood and impact of spills.

We deliver a comprehensive and bespoke training and environmental awareness programme to all of our people to ensure that new employees are correctly onboarded into the business, and for existing staff to continue their professional development. Our training ensures that everyone in the business and our supply chain are aware of their responsibilities and what they can actively do to ensure we are not only compliant, but where possible we deliver positive outcomes for the environment and local communities.

## TARGETS

- We will reduce our Environmental Incident Frequency Rate (EIFR) to less than 0.1 (calculated as Total Incident Score x 10,000 / Total Working Hours)
- More than 95% of our people will have received environmental training suitable for their role



# MILESTONE INFRASTRUCTURE

A part of MGroupServices

## ADDRESS

Suites 1 & 2 Woodlands Court,  
Woodlands Farm, Burnham Rd,  
Beaconsfield, HP9 2ST

## EMAIL

[environment@milestoneinfra.co.uk](mailto:environment@milestoneinfra.co.uk)

